

The Colorado Autism Mentoring Program: Building State-Wide Capacity to Serve Students Identified with Autism Spectrum Disorder in Schools

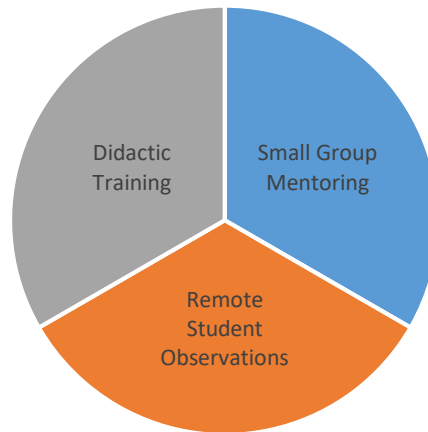
Patrick W. Romani, PhD, BCBA-D, Brooke Carson, PhD, and Rhonda Danner, MA



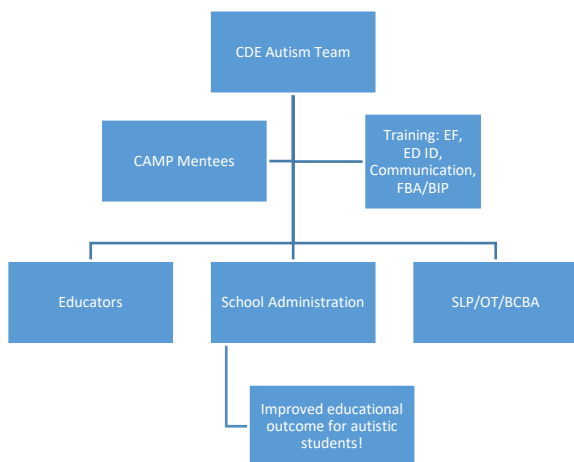
- Autistic students present with a variety of unique educational and behavioral needs
- Educators often report feeling unprepared to work with the complexities of these students

- The Colorado Autism Mentoring Program (CAMP) provides essential didactic and experiential training for educators
 - Over the past 4 years, 42 educators from 37 of Colorado's 178 districts participated

CAMP Activities



CAMP's Pyramidal Training Model



- CAMP mentees receive training on executive functioning intervention, educational identification of autism, communication strategies, and FBA/BIP to support autistic students
- CAMP mentees routinely support colleagues when designing autism-specific environments or interventions during and after completing CAMP